



# Excel: PivotTables – Beyond the Basics

Prepared by:  
**Mike Thomas**  
*[theexceltrainer.co.uk](http://theexceltrainer.co.uk)*

**LORMAN<sup>®</sup>**

Published on [www.lorman.com](http://www.lorman.com) - June 2020

Excel: PivotTables – Beyond the Basics, ©2020 Lorman Education Services. All Rights Reserved.

EXCEL is a registered trademark of Microsoft Corporation and this material is not sponsored by or affiliated with Microsoft Corporation. All other trademarks are the property of their respective owners.

## INTRODUCING

Lorman's New Approach to Continuing Education

# ALL-ACCESS PASS

The All-Access Pass grants you **UNLIMITED** access to Lorman's ever-growing library of training resources:

- ✓ **Unlimited Live Webinars** - 110+ live webinars added every month
- ✓ **Unlimited OnDemands** - Over 3,900 courses available
- ✓ **Videos** - More than 1,900 available
- ✓ **Slide Decks** - More than 3,300 available
- ✓ **White Papers** - More than 2,000 available
- ✓ **Reports**
- ✓ **Articles**
- ✓ **... and much more!**

Join the thousands of other pass-holders that have already trusted us for their professional development by choosing the All-Access Pass.



**Get Your All-Access Pass Today!**

**SAVE 20%**

Learn more: [www.lorman.com/pass/?s=special20](http://www.lorman.com/pass/?s=special20)

Use Discount Code Q7014393 and Priority Code 18536 to receive the 20% AAP discount.

\*Discount cannot be combined with any other discounts.

# Excel: Pivot Tables – Beyond the Basics

**Mike Thomas**

## Mike Thomas: The Excel Trainer

Mike Thomas has worked in the IT training business since 1989. He is a subject matter expert in a range of technologies including Microsoft Office and Apple Mac.

In 2012 Mike founded [theexceltrainer.co.uk](http://theexceltrainer.co.uk) where he has produced nearly 200 written and video-based Excel tutorials.

He has recorded several Excel training courses for [pluralsight.com](http://pluralsight.com) and in his career delivered hundreds of courses and webinars on a wide variety of technology-related topics.

Mike is a Fellow of The Learning and Performance Institute and has worked with and for a large number of global and UK-based companies and organizations across a diverse range of sectors.

In addition to training, he also designs and develops Microsoft Office-based solutions that automate key business tasks and processes.

## Mike Thomas: The Excel Trainer

Mike Thomas has worked in the IT training business since 1989. He is a subject matter expert in a range of technologies including Microsoft Office and Apple Mac.

In 2012 Mike founded [theexceltrainer.co.uk](http://theexceltrainer.co.uk) where he has produced nearly 200 written and video-based Excel tutorials.

He has recorded several Excel training courses for [pluralsight.com](http://pluralsight.com) and in his career delivered hundreds of courses and webinars on a wide variety of technology-related topics.

Mike is a Fellow of The Learning and Performance Institute and has worked with and for a large number of global and UK-based companies and organizations across a diverse range of sectors.

In addition to training, he also designs and develops Microsoft Office-based solutions that automate key business tasks and processes.

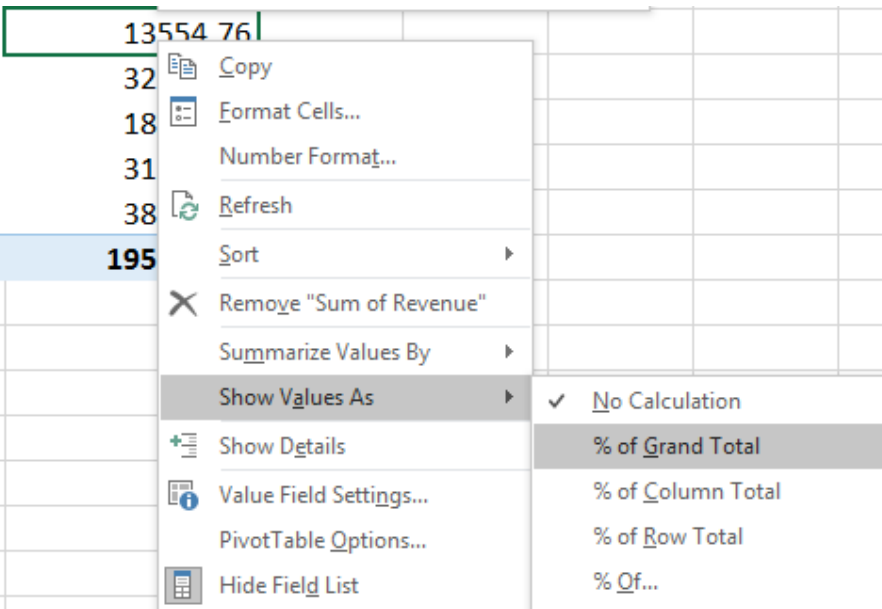
## Contents

Display Numbers as a Percentage of the Total .....	3
Display Numbers as a Difference .....	4
Display a Running Total.....	5
Display a Unique Count (2013 and 2016).....	6
Display a Unique Count (2010).....	7
Adding a Calculated Field .....	8
Adding a Calculated Item .....	8
Create a Pivot Table Based on a Separate Cache .....	9
Slicers .....	9
GetPivotData .....	10
Create a Pivot Table from Multiple Tables.....	10
Additional Resources.....	10

## Display Numbers as a Percentage of the Total

- Right click any of the numbers in the column containing the numbers to be changed
- Select **Show Values As**
- Select **% of Grand Total** (or any other desired option)

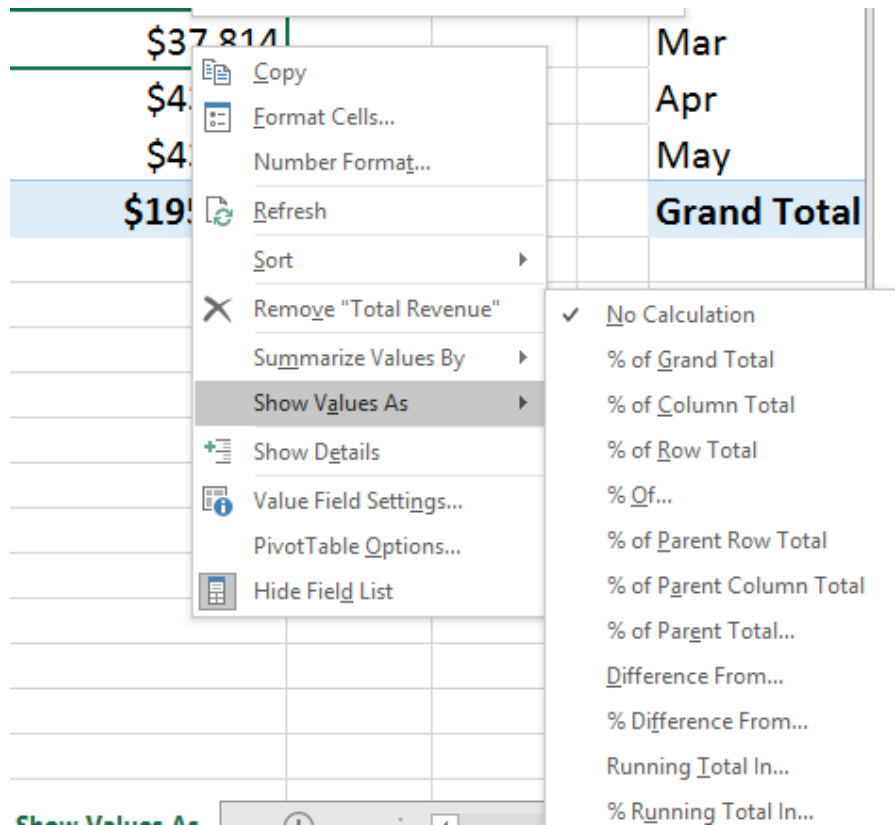
Peach	13554.76				
Pecan	32				
Strawberry	18				
Toffee	31				
Vanilla	38				
<b>Grand Total</b>	<b>195</b>				



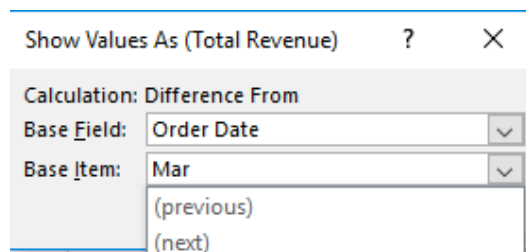
Note: to display the original numbers and the percentages, drag a second instance of the column into the values section in the Pivot Table Fields Panel

## Display Numbers as a Difference

- Right click any of the numbers in the column containing the numbers to be changed
- Select **Show Values As**
- Select **Difference From** (or % Difference From)



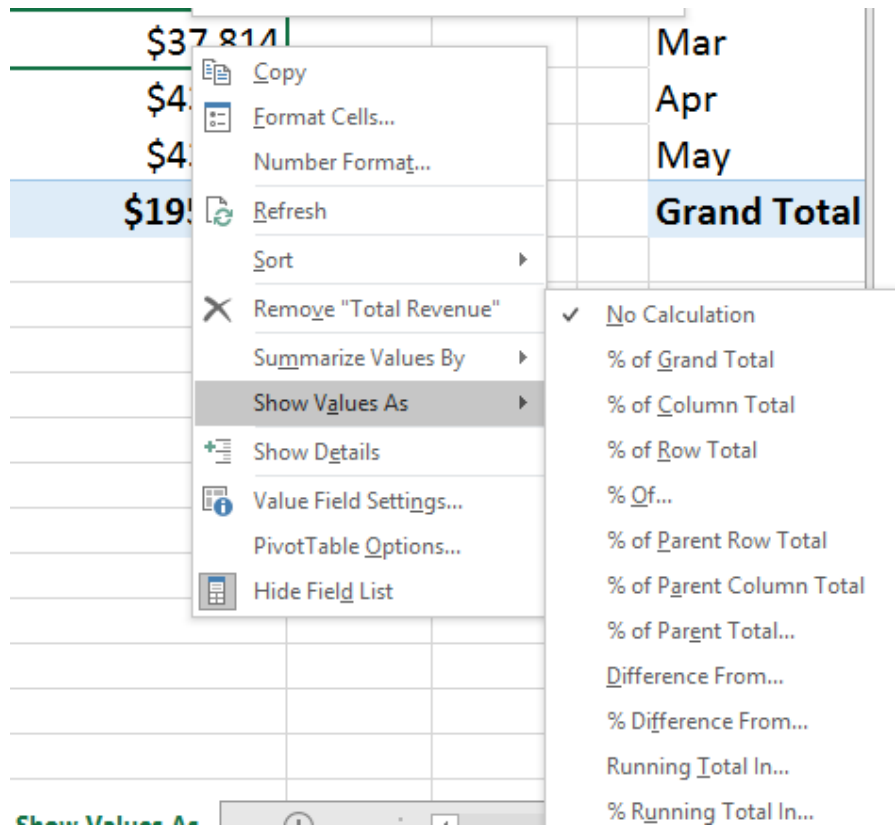
Note: to display the original numbers as well, drag a second instance of the column into the values section in the Pivot Table Fields Panel



- Select the appropriate values from the Base Field and Base Item dropdowns

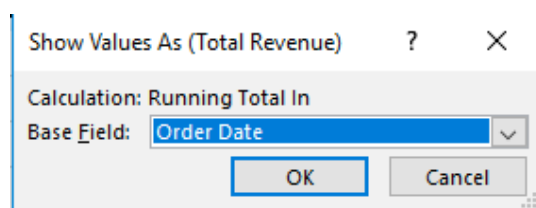
## Display a Running Total

- Right click any of the numbers in the column containing the numbers to be changed
- Select **Show Values As**
- Select **Running Total in**



Note: to display the original numbers as well, drag a second instance of the column into the values section in the Pivot Table Fields Panel

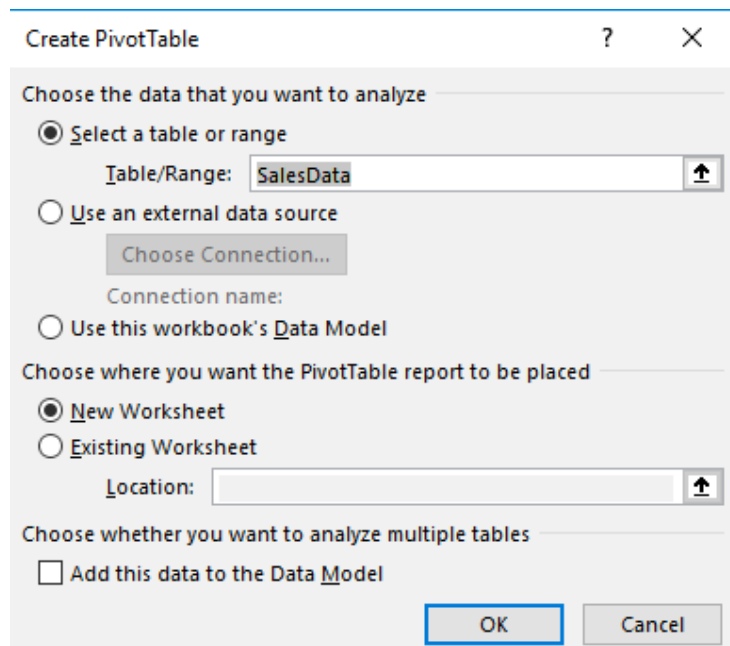
- Select the appropriate value from the Base Field dropdown



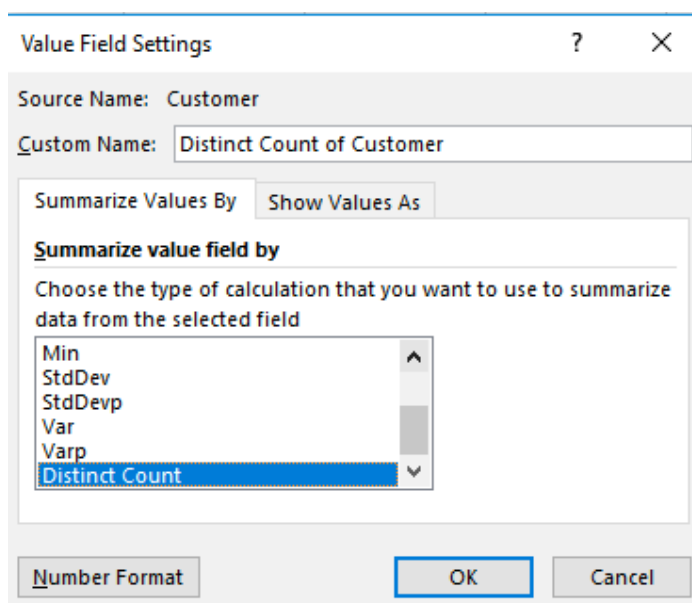


## Display a Unique Count (2013 and 2016)

- Ensure that when the pivot table is created, the **Add to Data Model** box is ticked



- Right click one of the numbers in the Count column of the pivot table
- Select **Summarize Values By**
- Select **More Options**

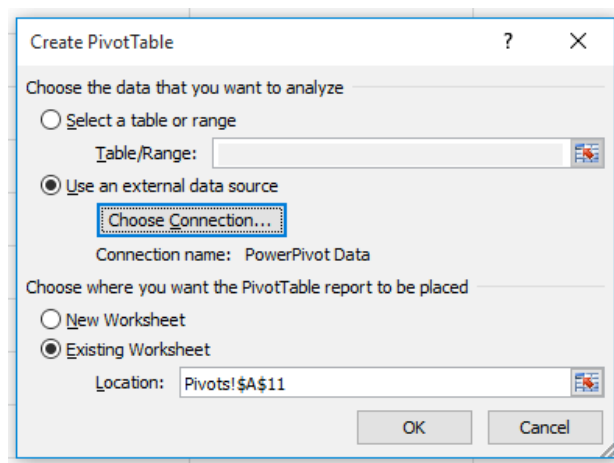


- Scroll down the list of Summary operators and select **Distinct Count**

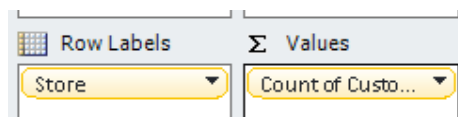


## Display a Unique Count (2010)

- Download and install the Power Pivot addin (<https://www.microsoft.com/en-us/download/details.aspx?id=29074>)
- Ensure that the data is stored as a Table (**CTRL+T** or **Insert > Table**)
- From the Ribbon select **PowerPivot > Create Linked Table**
- The table has been added to the Data Model
- Close the PowerPivot window
- Select the cell where the pivot table will be located
- Select **Insert > Pivot Table**



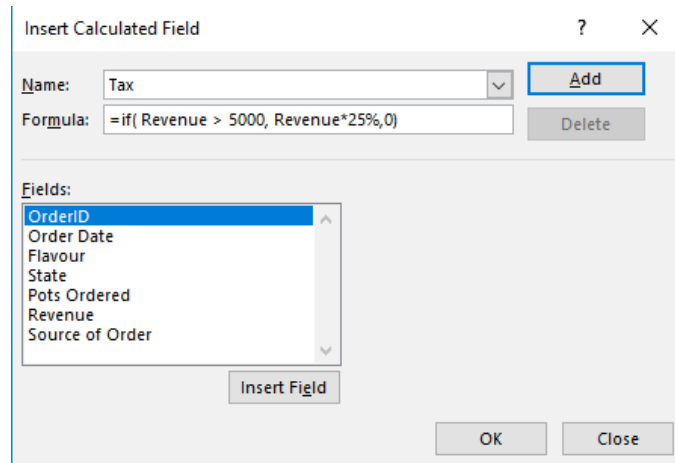
- Select **Use External Data Source**
- Click the **Use Connection** button
- Click **PowerPivot Data** (top item in the list)
- Click **Open**
- Select the location for the pivot table and click **OK**
- Add the fields to the Row/Column/Value sections as normal
- Click the dropdown arrow next to the field to be counted (in the Values section)



- Select **Edit Measure**
- Select **DistinctCount** from the list

## Adding a Calculated Field

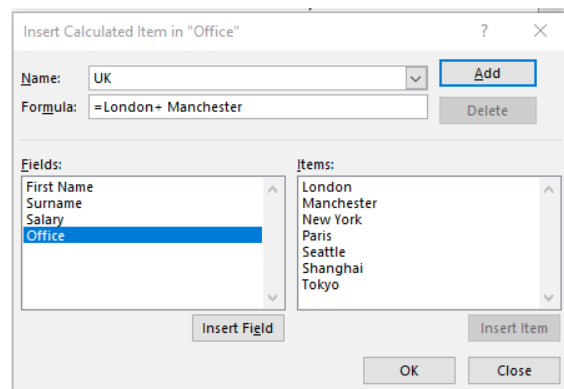
- Click the Analyze tab (Options tab in Excel 2007/2010)
- Click **Fields, Items and Sets**
- Click **Calculated Field**



- Type a name for the new field
- Type the appropriate formula for the field
- Click **OK**

## Adding a Calculated Item

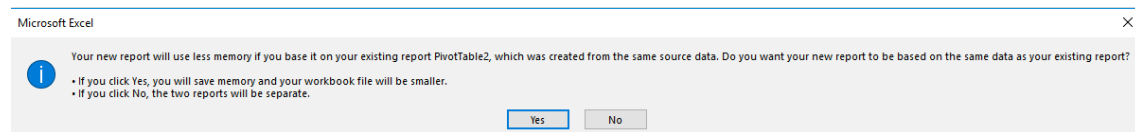
- Select a cell in the column to be grouped/calculated
- Click the Analyze tab (**Options** tab in Excel 2007/2010)
- Click **Fields, Items and Sets**
- Click **Calculated Item**



- Type a name for the new field
- Type the appropriate formula for the field using the appropriate field values
- Click **OK**

## Create a Pivot Table Based on a Separate Cache

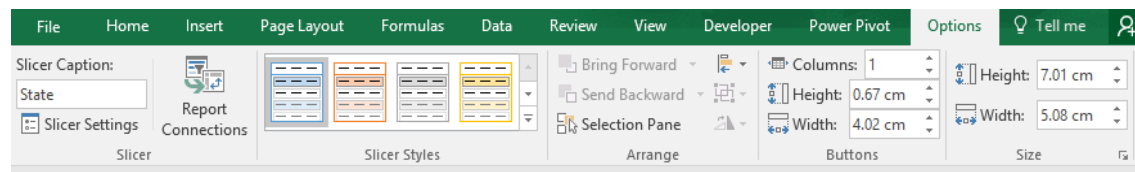
- Place cursor in a blank cell
- Press **ALT+D**
- Press **P**
- Click **Microsoft Office Excel list or database**, and then click **Next**
- Select the range of data (or Table) on which you want to base the new PivotTable report, and then click **Next**



- When the PivotTable and PivotChart Wizard displays a message asking if you want to share the data cache, click **No**
- Select a location for the new PivotTable report, and then click **Finish**

## Slicers

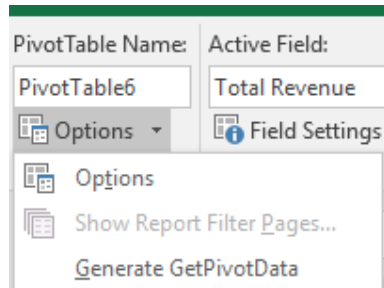
- Select a cell in the pivot table that the slicer is to be based on
- Click the **Analyze** tab (**Options** tab in Excel 2007/2010)
- Click **Insert Slicer**
- Select the field(s) that the Slicer(s) is/are to be based on



- Attach the Slicer to another pivot table: Use the **Report Connections** button
- Change the Slicer colour: Use the **Slicer Styles**
- Display the Slicer buttons in multiple columns: Use the **Columns** box
- Lock Slicer: Right click the Slicer > **Size & Properties** > **Position and Layout**

## GetPivotData

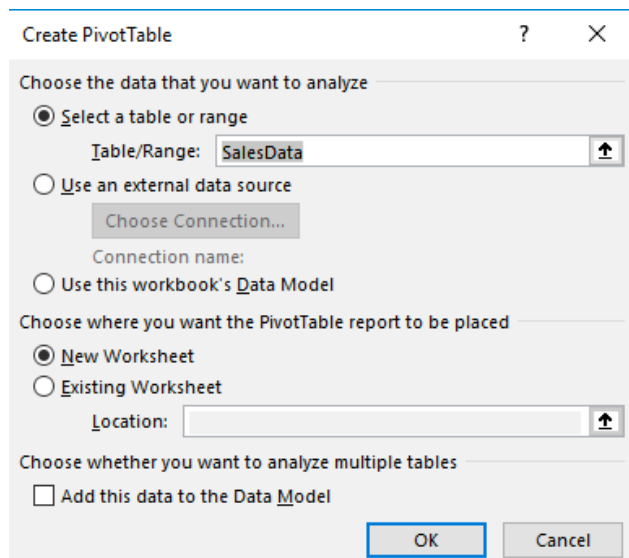
- Switch on and off by clicking **Generate GetPivotData** on the **Options** button on the **Analyze** tab (**Options** tab in Excel 2007/2010)



When enabled, clicking on a cell within a pivot table whilst creating a formula, generates a GETPIVOTDATA function to reference the cell

## Create a Pivot Table from Multiple Tables

- Ensure that when the pivot table is created, the Add to Data Model box is ticked



- Click **All** at the top of the Pivot Table Fields List
- Define a relationship between the tables

## Additional Resources

Downloadable Videos and PDF's: <http://theexceltrainer.co.uk/reportsresources>

The material appearing in this website is for informational purposes only and is not legal advice. Transmission of this information is not intended to create, and receipt does not constitute, an attorney-client relationship. The information provided herein is intended only as general information which may or may not reflect the most current developments. Although these materials may be prepared by professionals, they should not be used as a substitute for professional services. If legal or other professional advice is required, the services of a professional should be sought.

The opinions or viewpoints expressed herein do not necessarily reflect those of Lorman Education Services. All materials and content were prepared by persons and/or entities other than Lorman Education Services, and said other persons and/or entities are solely responsible for their content.

Any links to other websites are not intended to be referrals or endorsements of these sites. The links provided are maintained by the respective organizations, and they are solely responsible for the content of their own sites.